

**North Bristol**  
NHS Trust

## Connecting Laboratory Services in the South West of England with NPEX

David Gibbs  
Pathology Services Director  
7<sup>th</sup> September 2017

# Severn Pathology

---

- Large NHS pathology service, regional PHE service and Genomics Hub fully integrated in purpose built facility comprising:
    - Large integrated blood sciences with regional SIHMDS, Newborn Screening
    - Consolidated cellular pathology for whole of Bristol
    - Consolidated infection sciences in partnership with PHE covering all of Bristol and Bath
    - South West Genomic Laboratory Hub in partnership with Exeter
-

# Severn Pathology

---

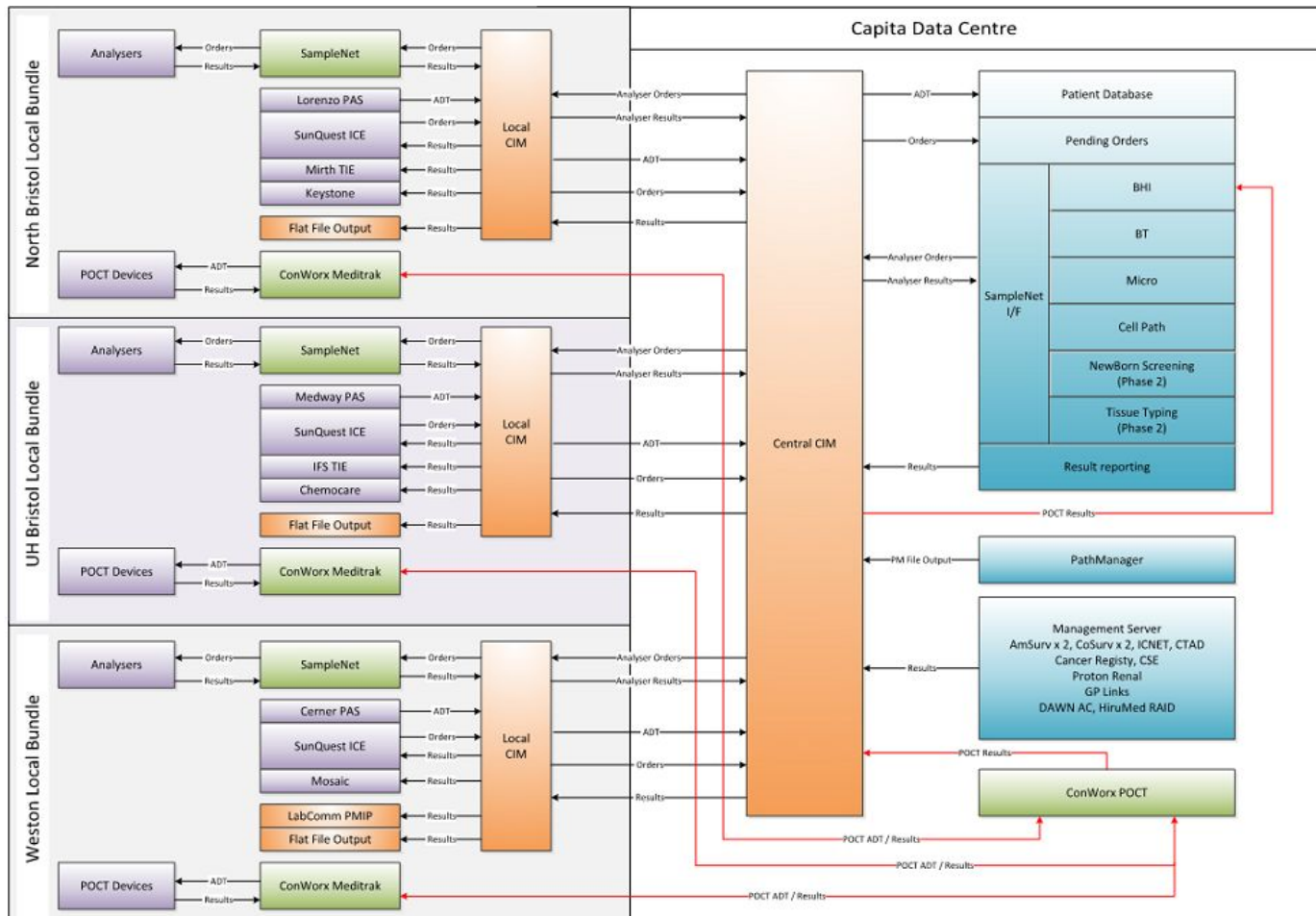


# The Bristol LIMS Solution

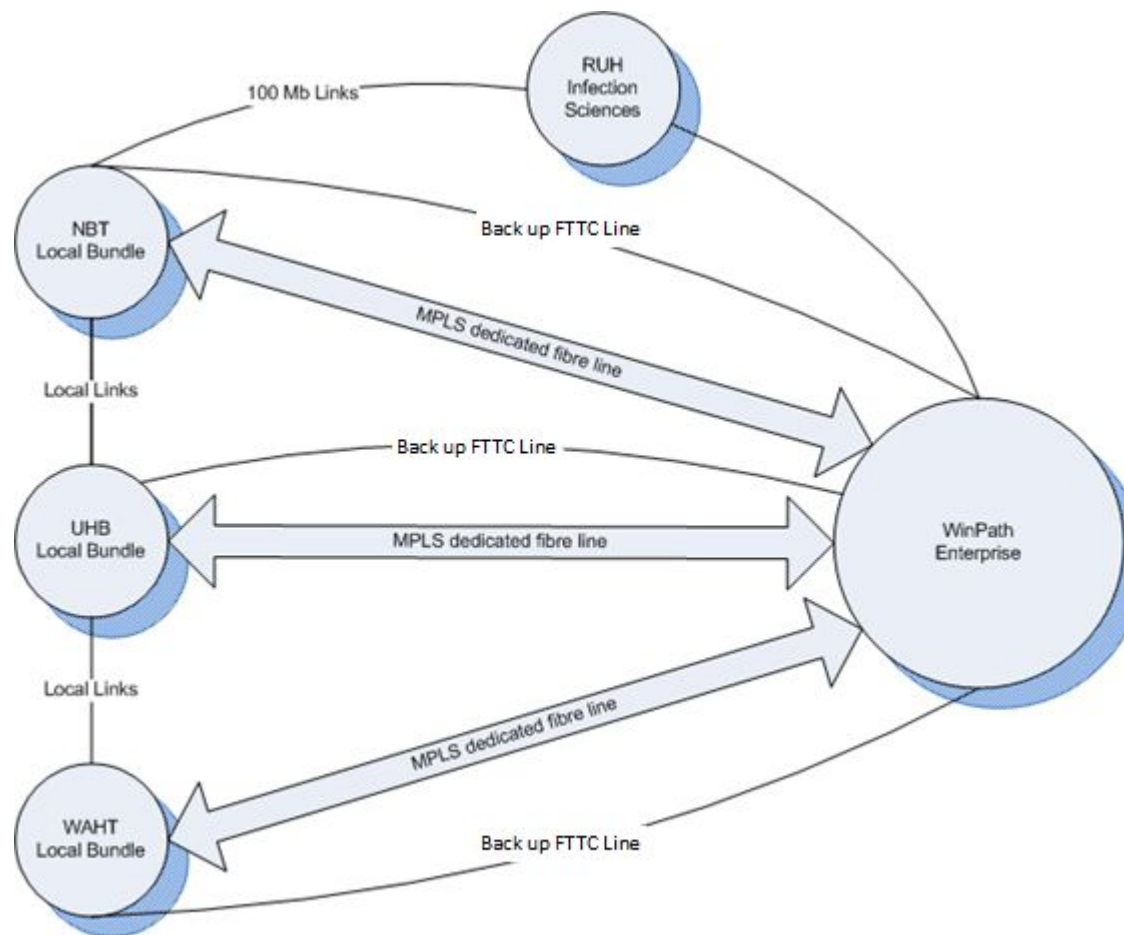
---

- NBT & PHE – Severn Pathology
  - UHBristol – Independent Blood Sciences and Blood Transfusion
  - Weston – Small fully independent whole pathology service
  - RUH Bath – Infection Sciences only, provided by PHE
-

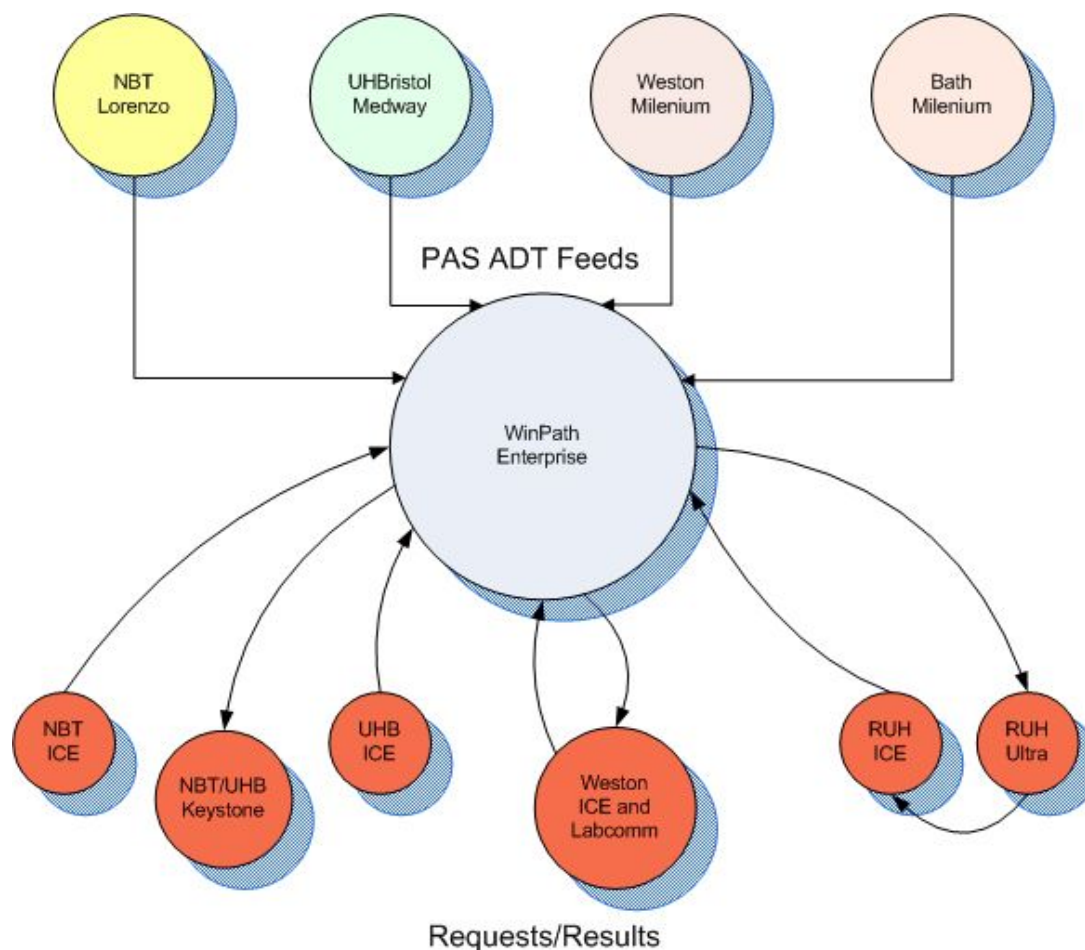
# What does it look like?



# Network Resilience



# Patient Data Pathways



# Reference Laboratory

---

- Providing specialist services regionally and nationally
    - Immunology
    - The Specialist Integrated Haematological Malignancy Diagnostic Service (SIHMDS)
    - Regional virology service
    - Regional cytology service (inc. Primary HPV)
    - National antimicrobial assay service
    - National mycology service
-



# South West LIMS

---

- University Hospitals Bristol, North Bristol, Weston Area Health and PHE (Southwest) (WinPath Enterprise – single instance) deployed 2016
  - Royal Devon and Exeter (DXC IPS)
  - Royal Cornwall (WinPath) -
  - South Devon and Torbay (WinPath).
  - Northern Devon (LabCentre) – deployment of InterSystems TC Enterprise underway planned go-live 2020
  - Plymouth (DXC APEX) -
  - Southwest Pathology Services/Taunton, Yeovil, iPP (LabCentre
  - Royal United Bath (Cirdan)
  - Cheltenham and Gloucester (DXC IPS) deployment of InterSystems TC
-

# South West NPEX rollout

---

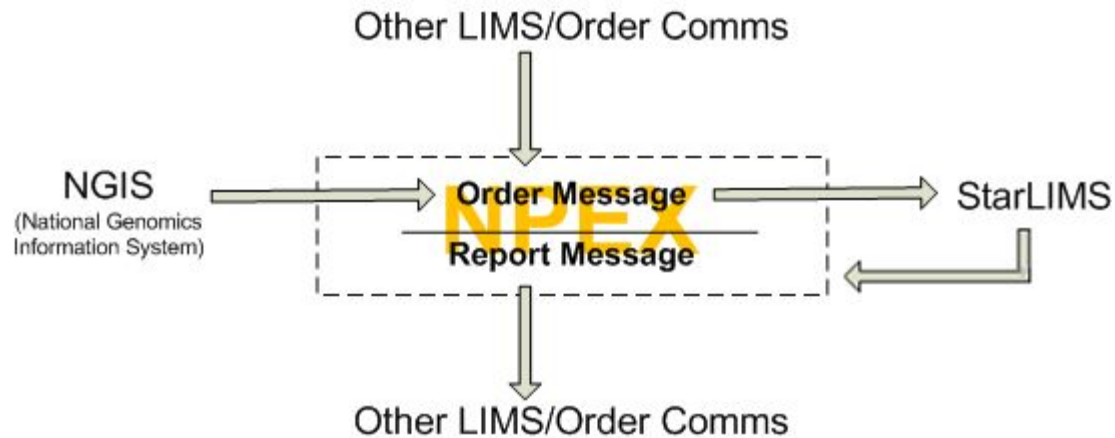
- University Hospitals Bristol, North Bristol, Weston Area Health and PHE (Southwest) NPEX Purchased & implementing.
  - Royal Devon and Exeter NPEX - Purchased & implementing.
  - Royal Cornwall NPEX - In the 18/19 business plan but still dependent on agreed investment (as of 01/02/18).
  - South Devon and Torbay NPEX - Reviewing finances
  - Northern Devon NPEX - Purchased & implementing.
  - Plymouth NPEX - Purchased & live.
  - Southwest Pathology Services/Taunton, Yeovil, iPP NPEX - Purchased & live.
  - Royal United Bath NPEX - Business case is in progress and part plans for 18/19.
  - Cheltenham and Gloucester NPEX - Business case in progress but implementation expected to be October 18 to end of March 19 dependent on LIMS Go-Live.
-

# NPEX – WinPath



# NPEX – StarLIMS - NGIS

---





**Severn Pathology**

North Bristol NHS Trust

---

**Thank you**

David Gibbs  
Pathology Services Director  
[david.gibbs@nbt.nhs.uk](mailto:david.gibbs@nbt.nhs.uk)

---